

MARTIN AUTOMATIC • NCHW

Narrow Web Cantilevered Splicer



Consumer expectations and satisfaction create a demand for quality products. Nonwovens are delivered to the converting process with exact tensions required for application and material.

Martin Automatic has successfully addressed traditional problems encountered in the splicing of nonwoven materials. The Martin CHW Cantilevered Unwind Splicer eliminates long splice tails and tension disturbances therefore greatly reducing waste. Martin zero-speed splicing systems incorporate inertia-compensated tension control providing essentially constant tension to the process line throughout the splicing process.



The NCHW Splicing Unwind can provide a lap or butt splice depending on the material and the requirements of the process. Martin's patented heat seal joint utilizes the thermal properties of the material to provide a tapeless splice which is virtually undetectable.

The pivoting splice head design provides operator convenience along with quick splice preparation.

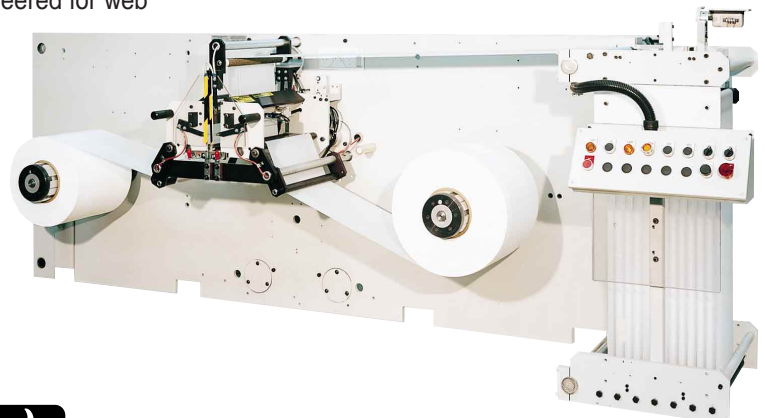
Designed for a variety of applications, the Martin NCHW can be application-engineered for web widths from 1 to 24 inches and can be free-standing or process

*The NCHW can be custom engineered to replace existing plate mounted systems.



mounted for space-restricted applications.

Martin NCHW Splicers are essentially a "drop-in" installation if they incorporate Martin's patented MC 2000 Controls. This optional control package eliminates the need for conventional drives and PLC's. This "total" system means that each splicing unwind does not require complex controls integration to the process line. The result is a quick and simple installation. Martin will also provide conventional drives and PLC systems depending on customer requirements.



M Martin Engineers Solutions!

Martin's NCHW offers:

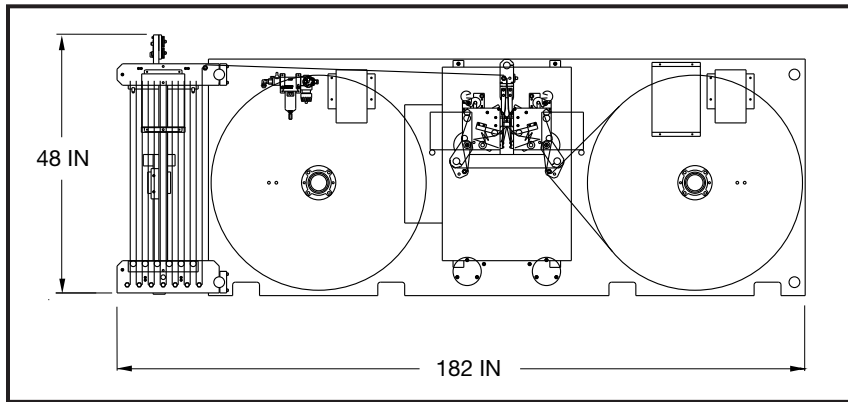
STANDARD FEATURES

- Fixed, cantilevered spindle design
- Pivoting split splice unit
- Easy access splice preparation
- Hot wire cut-off for either lap or optional heat-seal butt splice.
- Tape lap splice

OPTIONAL

- Martin's patented MC 2000 controls'
- Free standing or special plate mounted for special installation needs.
- Heat seal lap splice
- Martin's patented Heat Seal Butt Splice
- CE Certification
- In-register splicing capabilities

Optional PLATE-MOUNTED Splicer for special installation needs.

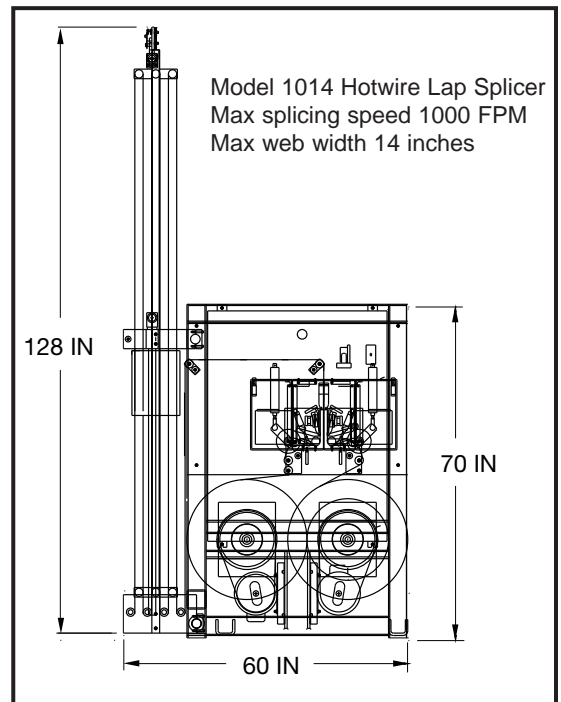
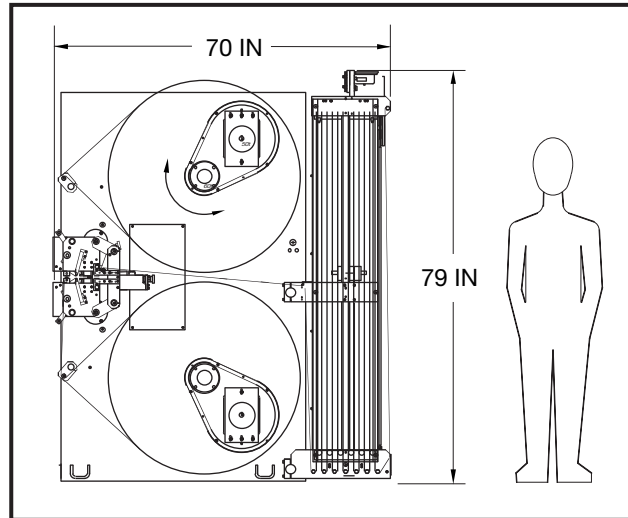


As with all Martin products, the NCHW is application-engineered to your process. Current web widths are to 24 inches (610MM) with splicing speeds of 1312 FPM (400 MPM) (based on roll weight and material splicing tension required). Contact Martin Automatic Inc for information.

SPECIFICATIONS

Maximum Splicing Speed	1312 FPM	400 MPM
Maximum Web Width	24 IN	610 MM
Maximum Roll Diameter	specific to model	

Each model NCHW is specifically designed per application. The Martin Model 1314 NCHW roll-over-roll design accommodates space restricted areas where material weight does not inhibit easy roll lifting. Speeds to 1300 FPM. Web widths to 14 inches.



Martin Automatic Inc

1661 Northrock Ct
 Rockford, Illinois 61103, U.S.A.
 Tel: (815) 654-4800 • Fax: (815) 654-4810
 www.martinauto.com